

HCA 60

HOLLOWCONE AIR 60°



DIMENSIONI (mm) • SIZE (mm) • DIMENSIONES (mm)

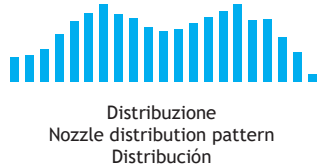
UTILIZZO • USE • UTILIZACIÓN

Herbicides
Suitable for

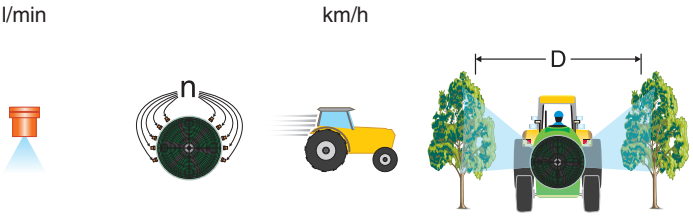
Fungicides
Suitable for

Insecticides
Suitable for

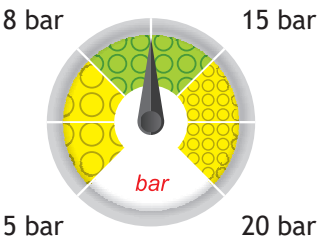
- Ugello a cono vuoto con inserto in ceramica e corpo in resina acetamica.
 - Il getto creato da HCA60 garantisce una copertura ottimale pur riducendo il rischio di deriva del prodotto.
 - Adatto per l'utilizzo su atomizzatore.
 - Il corpo esterno stampato in resina acetamica, unito all'inserto in ceramica conferisce eccezionali caratteristiche di durata.
 - Adatto per trattamenti con erbicidi, fungicidi ed insetticidi.
- Hollowcone nozzle with ceramic insert and acetal resin body.
 - HCA60 spray ensures excellent spraying range, yet reducing the product drift.
 - Suitable for orchard sprayer.
 - Their acetal resin molded outer body, together with their ceramic insert, ensures an exceptionally long useful life.
 - Suitable for herbicides, fungicides and pesticides.
- Boquilla de cono vacío con inserto de cerámica y cuerpo en resina acetálica.
 - El chorro creado por HCA60 garantiza una cobertura óptima reduciendo el riesgo de deriva del producto.
 - Adecuado para el uso en atomizador.
 - El cuerpo exterior moldeado en resina acetálica, junto al inserto de cerámica, le otorga excepcionales características de durabilidad.
 - Adecuado para tratamientos con herbicidas, fungicidas e insecticidas.



$$\text{Vol (l/ha)} = \frac{\text{l/min} \times n \times 600}{\text{km/h} \times D \text{ (m)}}$$



60° Spraying angle	Orchard Treatment	ISO 10625 Colour coding	10 pcs. cod. B1 Blister pack
5-10 Nm Tightening torque for nuts	402905xx Cap	PAG. 105 Brass Cap	Ceramic Material



HCA 60

HOLLOWCONE AIR 60°

COD. CODE CÓD.	q (l/min)																	
	3 bar	4 bar	5 bar	6 bar	7 bar	8 bar	9 bar	10 bar	11 bar	12 bar	13 bar	14 bar	15 bar	16 bar	17 bar	18 bar	19 bar	20 bar
HCA600075	0.30	0.35	0.39	0.42	0.46	0.49	0.52	0.55	0.57	0.60	0.62	0.65	0.67	0.69	0.71	0.73	0.75	0.77
HCA60001	0.40	0.46	0.52	0.57	0.61	0.65	0.69	0.73	0.77	0.80	0.83	0.86	0.89	0.92	0.95	0.98	1.01	1.03
HCA60015	0.60	0.69	0.77	0.85	0.92	0.98	1.04	1.10	1.15	1.20	1.25	1.30	1.34	1.39	1.43	1.47	1.51	1.55
HCA6002	0.80	0.92	1.03	1.13	1.22	1.31	1.39	1.46	1.53	1.60	1.67	1.73	1.79	1.85	1.90	1.96	2.01	2.07
HCA60025	1.00	1.15	1.29	1.41	1.53	1.63	1.73	1.83	1.91	2.00	2.08	2.16	2.24	2.31	2.38	2.45	2.52	2.58
HCA6003	1.20	1.39	1.55	1.70	1.83	1.96	2.08	2.19	2.30	2.40	2.50	2.59	2.68	2.77	2.86	2.94	3.02	3.10
HCA60035	1.40	1.62	1.81	1.98	2.14	2.29	2.42	2.56	2.68	2.80	2.91	3.02	3.13	3.23	3.33	3.43	3.52	3.61
HCA6004	1.60	1.85	2.07	2.26	2.44	2.61	2.77	2.92	3.06	3.20	3.33	3.46	3.58	3.70	3.81	3.92	4.03	4.13
HCA6005	2.00	2.31	2.58	2.83	3.06	3.27	3.46	3.65	3.83	4.00	4.16	4.32	4.47	4.62	4.76	4.90	5.03	5.16
HCA6006	2.40	2.77	3.10	3.39	3.67	3.92	4.16	4.38	4.60	4.80	5.00	5.18	5.37	5.54	5.71	5.88	6.04	6.20

Calcolo dei l/ha nelle note tecniche a fine catalogo
 How to calculate l/ha in the technical suggestions section, at the end of the catalogue
 Cálculo de los l/ha en las notas técnicas al final del catálogo

