

# HCA 80

## HOLLOWCONE AIR 80°



**DIMENSIONI (mm) • SIZE (mm) • DIMENSIONES (mm)**

**UTILIZZO • USE • UTILIZACIÓN**

Herbicides  
Suitable for

Fungicides  
Suitable for

Insecticides  
Suitable for

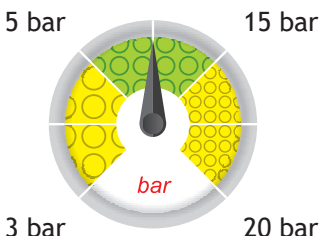
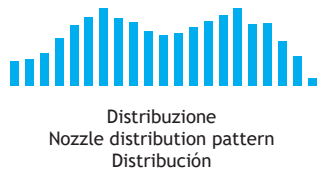
- Ugello a cono vuoto con inserto in ceramica e corpo in resina acetaleica.
- Il getto creato da HCA80 garantisce una copertura ottimale pur riducendo il rischio di deriva del prodotto.
- Adatto per l'utilizzo su atomizzatore.
- Il corpo esterno stampato in resina acetaleica, unito all'inserto in ceramica conferisce eccezionali caratteristiche di durata.
- Adatto per trattamenti con erbicidi, fungicidi ed insetticidi.

- Hollowcone nozzle with ceramic insert and acetal resin body.
- HCA80 spray ensures excellent spraying range, yet reducing the product drift.
- Suitable for orchard sprayer.
- Their acetal resin molded outer body, together with their ceramic insert, ensures an exceptionally long useful life.
- Suitable for herbicides, fungicides and pesticides.

 80° Spraying angle	 Orchard Treatment	 ISO 10625 Colour coding	 10 pcs. cod. B1 Blister pack
 5-10 Nm Tightening torque for nuts	 402905xx Cap	 PAG.105 Brass Cap	 Ceramic Material

	G 2007 HCA8001		G 2010 HCA80025
	G 2008 HCA80015		G 2011 HCA8003
	G 2009 HCA8002		G 2012 HCA8004

Copertura  
Spray coverage  
Cobertura



# HCA 80

## HOLLOWCONE AIR 80°

COD. CODE CÓD.	q (l/min)																	
	3 bar	4 bar	5 bar	6 bar	7 bar	8 bar	9 bar	10 bar	11 bar	12 bar	13 bar	14 bar	15 bar	16 bar	17 bar	18 bar	19 bar	20 bar
HCA8001	0.40	0.46	0.52	0.57	0.61	0.65	0.69	0.73	0.77	0.80	0.83	0.86	0.89	0.92	0.95	0.98	1.01	1.03
HCA80015	0.60	0.69	0.77	0.85	0.92	0.98	1.04	1.10	1.15	1.20	1.25	1.30	1.34	1.39	1.43	1.47	1.51	1.55
HCA8002	0.80	0.92	1.03	1.13	1.22	1.31	1.39	1.46	1.53	1.60	1.67	1.73	1.79	1.85	1.90	1.96	2.01	2.07
HCA80025	1.00	1.15	1.29	1.41	1.53	1.63	1.73	1.83	1.91	2.00	2.08	2.16	2.24	2.31	2.38	2.45	2.52	2.58
HCA8003	1.20	1.39	1.55	1.70	1.83	1.96	2.08	2.19	2.30	2.40	2.50	2.59	2.68	2.77	2.86	2.94	3.02	3.10
HCA80035	1.40	1.62	1.81	1.98	2.14	2.29	2.42	2.56	2.68	2.80	2.91	3.02	3.13	3.23	3.33	3.43	3.52	3.61
HCA8004	1.60	1.85	2.07	2.26	2.44	2.61	2.77	2.92	3.06	3.20	3.33	3.46	3.58	3.70	3.81	3.92	4.03	4.13
HCA8005	2.00	2.31	2.58	2.83	3.06	3.27	3.46	3.65	3.83	4.00	4.16	4.32	4.47	4.62	4.73	4.90	5.03	5.16

Calcolo dei l/ha nelle note tecniche a fine catalogo  
 How to calculate l/ha in the technical suggestions section, at the end of the catalogue  
 Cálculo de los l/ha en las notas técnicas al final del catálogo



$$\text{Vol (l/ha)} = \frac{\text{l/min} \times n \times 600}{\text{km/h} \times D \text{ (m)}}$$

