

HCI 80

HOLLOWCONE CERAMIC ISO 80°



DIMENSIONI (mm) • SIZE (mm) • DIMENSIONES (mm)

UTILIZZO • USE • UTILIZACIÓN

Herbicides
Suitable for

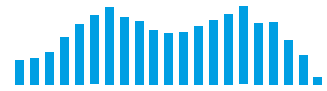
Fungicides
Suitable for

Insecticides
Suitable for

- Ugello a cono vuoto con inserto in ceramica e corpo in resina acetatica.
 - Il getto creato da Hollowcone Ceramic genera piccole gocce e garantisce una copertura eccellente.
 - Adatto per l'utilizzo su atomizzatore.
 - Perfetto per l'utilizzo su alberi e cespugli anche senza l'intervento dell'aria.
- Hollowcone nozzle with ceramic insert and acetal resin body.
 - Hollowcone Ceramic nozzles spray small drops and ensure excellent coverage.
 - Suitable for orchard sprayer.
 - Perfect for trees and bushes without requiring the use of air.
- Boquilla de cono vacío con inserto de cerámica y cuerpo en resina acetática.
 - El chorro creado por Hollowcone Ceramic tiene pequeñas gotas y garantiza una excelente cobertura.
 - Adecuado para el uso en atomizador.
 - Perfecta para el uso en árboles y arbustos, incluso sin la intervención del aire.



Copertura
Spray coverage
Cobertura

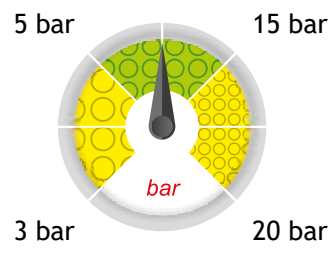


Distribuzione
Nozzle distribution pattern
Distribución

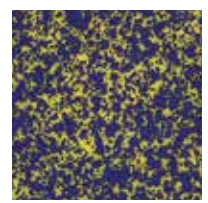


Camera di turbolenza
Turbulence chamber
Cámara de turbulencia

 80° Spraying angle	 Boom Treatment	 Orchard Treatment
 ISO 10625 Colour coding	 10 pcs. Blister pack cod. B1	 5-10 Nm Tightening torque for nuts
 402905xx Cap	 PAG. 105 Brass Cap	 Ceramic Material



Dimensione delle gocce su bersaglio
Drop size pattern on target
Dimensiones de las gotas en el blanco



HCI 80

HOLLOWCONE CERAMIC ISO 80°

COD. CODE CÓD.	q (l/min)																	
	3 bar	4 bar	5 bar	6 bar	7 bar	8 bar	9 bar	10 bar	11 bar	12 bar	13 bar	14 bar	15 bar	16 bar	17 bar	18 bar	19 bar	20 bar
HCI80005	0.20	0.23	0.26	0.28	0.31	0.33	0.35	0.37	0.38	0.40	0.42	0.43	0.45	0.46	0.48	0.49	0.50	0.52
HCI800075	0.30	0.35	0.39	0.42	0.46	0.49	0.52	0.55	0.57	0.60	0.62	0.65	0.67	0.69	0.71	0.73	0.75	0.77
HCI8001	0.40	0.46	0.52	0.57	0.61	0.65	0.69	0.73	0.77	0.80	0.83	0.86	0.89	0.92	0.95	0.98	1.01	1.03
HCI80015	0.60	0.69	0.77	0.85	0.92	0.98	1.04	1.10	1.15	1.20	1.25	1.30	1.34	1.39	1.43	1.47	1.51	1.55
HCI8002	0.80	0.92	1.03	1.13	1.22	1.31	1.39	1.46	1.53	1.60	1.67	1.73	1.79	1.85	1.90	1.96	2.01	2.07
HCI80025	1.00	1.15	1.29	1.41	1.53	1.63	1.73	1.83	1.91	2.00	2.08	2.16	2.24	2.31	2.38	2.45	2.52	2.58
HCI8003	1.20	1.39	1.55	1.70	1.83	1.96	2.08	2.19	2.30	2.40	2.50	2.59	2.68	2.77	2.86	2.94	3.02	3.10
HCI80035	1.40	1.62	1.81	1.98	2.14	2.29	2.42	2.56	2.68	2.80	2.91	3.02	3.13	3.23	3.33	3.43	3.52	3.61
HCI8004	1.60	1.85	2.07	2.26	2.44	2.61	2.77	2.92	3.06	3.20	3.33	3.46	3.58	3.70	3.81	3.92	4.03	4.13
HCI8005	2.00	2.31	2.58	2.83	3.06	3.27	3.46	3.65	3.83	4.00	4.16	4.32	4.47	4.62	4.76	4.90	5.03	5.16
HCI8006	2.40	2.77	3.10	3.39	3.67	3.92	4.16	4.38	4.60	4.80	5.00	5.18	5.37	5.54	5.71	5.88	6.04	6.20

Calcolo dei l/ha nelle note tecniche a fine catalogo
 How to calculate l/ha in the technical suggestions section, at the end of the catalogue
 Cálculo de los l/ha en las notas técnicas al final del catálogo

