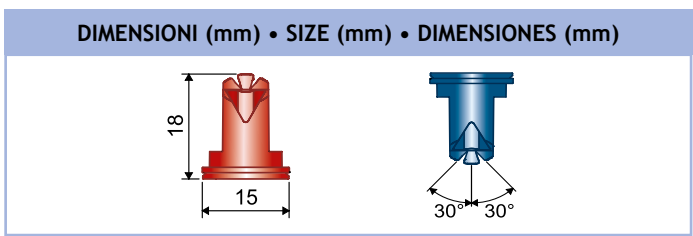


ATP

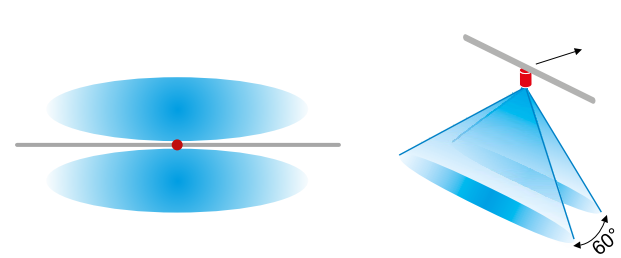
AIR TWIN PLASTIC



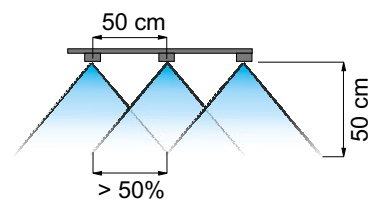
- Offre una buona copertura, migliorando la penetrazione ed il deposito dei prodotti grazie ai due getti inclinati di 30°+30°.
- Design compatto per ridurre il rischio di danneggiamenti.
- Doppia presa d'aria di grandi dimensioni con profilo anti-intasamento.
- Grosse gocce cariche di aria per assicurare una maggiore copertura della superficie fogliare.
- Completamente smontabile per una facile manutenzione.
- Utilizzabile con testine per gli ugelli di tipo Flat Fan.
- Stampato in resina acetica, ad alta stabilità chimica, che conferisce ottime caratteristiche di durata.

- Provides good spraying range, improving penetration and application of the products thanks to two nozzles at 30°+30°.
- Compact design to reduce the risk of damage.
- Large double air intake with anti-clogging profile.
- Large drops filled with air to ensure improved spraying of the leaf surface.
- Can be fully disassembled for easy maintenance.
- Can be used with Flat Fan nozzle caps.
- Made of molded acetal resin, a polymer ensuring high chemical stability and an excellent useful life.

- Ofrece una buena cobertura, mejorando la penetración y el depósito de productos gracias a los dos chorros inclinados de 30°+30°.
- Diseño compacto para reducir posibles daños.
- Doble toma de aire de gran tamaño con perfil anti-obstrucción.
- Gruesas gotas cargadas de aire para asegurar una mayor cobertura de la superficie de las hojas.
- Completamente desmontable para un fácil mantenimiento.
- Puede ser utilizado con cabezales para boquillas tipo Flat Fan.
- Moldeado en resina acetálica, con alta estabilidad química, que otorga excepcionales características de duración.



Copertura Spray coverage Cobertura



Distanza sulla barra Boom spacing Distanza en la barra

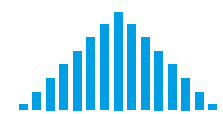


Diagramma di distribuzione ugello singolo Single nozzle distribution pattern Diagrama de distribución boquilla individual

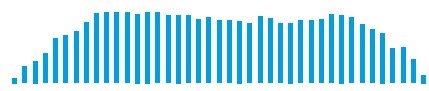
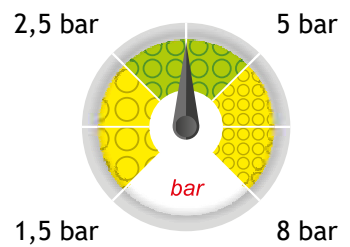
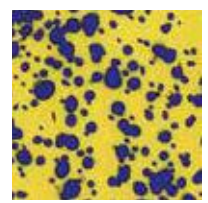


Diagramma di distribuzione su barra Boom distribution pattern Diagrama de distribución en la barra

110° Spraying angle	Boom Treatment	ISO 10625 Colour coding
10 pcs. Blister pack	402900xx Cap	Acetal Resin Material






Dimensione delle gocce su bersaglio Drop size pattern on target Dimensiones de las gotas en el blanco



[ATP]

AIR TWIN PLASTIC

COD. CODE CÓD.	 bar	 drop	 l/min	l/ha (spazio tra gli ugelli: 50 cm) l/ha (nozzle spacing: 50 cm) l/ha (espacio entre las boquillas: 50 cm)									
				4 km/h	6 km/h	8 km/h	10 km/h	12 km/h	14 km/h	16 km/h	18 km/h	20 km/h	25 km/h
				ATP3030015	1.5	C	0.42	127	85	64	51	42	36
	3	M	0.60	180	120	90	72	60	51	45	40	36	29
	5	M	0.77	232	155	116	93	77	66	58	52	46	37
	7	F	0.92	275	183	137	110	92	79	69	61	55	44
	8	F	0.98	294	196	147	118	98	84	73	65	59	47
ATP303002	1.5	XC	0.57	170	113	85	68	57	48	42	38	34	27
	3	VC	0.80	240	160	120	96	80	69	60	53	48	38
	5	C	1.03	310	207	155	124	103	89	77	69	62	50
	7	M	1.22	367	244	183	147	122	105	92	81	73	59
	8	M	1.31	392	261	196	157	131	112	98	87	78	63
ATP3030025	1.5	VC	0.71	212	141	106	85	71	61	53	47	42	34
	3	C	1.00	300	200	150	120	100	86	75	67	60	48
	5	M	1.29	387	258	194	155	129	111	97	86	77	62
	7	M	1.53	458	306	229	183	153	131	115	102	92	73
	8	M	1.63	490	327	245	196	163	140	122	109	98	78
ATP303003	1.5	VC	0.85	255	170	127	102	85	73	64	57	51	41
	3	C	1.20	360	240	180	144	120	103	90	80	72	58
	5	M	1.55	465	310	232	186	155	133	116	103	93	74
	7	M	1.83	550	367	275	220	183	157	137	122	110	88
	8	M	1.96	588	392	294	235	196	168	147	131	118	94
ATP303004	1.5	VC	1.13	339	226	170	136	113	97	85	75	68	54
	3	C	1.60	480	320	240	192	160	137	120	107	96	77
	5	C	2.07	620	413	310	248	207	177	155	138	124	99
	7	M	2.44	733	489	367	293	244	209	183	163	147	117
	8	M	2.61	784	523	392	314	261	224	196	174	157	125
ATP303005	1.5	VC	1.41	424	283	212	170	141	121	106	94	85	68
	3	C	2.00	600	400	300	240	200	171	150	133	120	96
	5	C	2.58	775	516	387	310	258	221	194	172	155	124
	7	M	3.06	917	611	458	367	306	262	229	204	183	147
	8	M	3.27	980	653	490	392	327	280	245	218	196	157
ATP303006	1.5	XC	1.70	509	339	255	204	170	145	127	113	102	81
	3	VC	2.40	720	480	360	288	240	206	180	160	144	115
	5	VC	3.10	930	620	465	372	310	266	232	207	186	149
	7	C	3.67	1100	733	550	440	367	314	275	244	220	176
	8	C	3.92	1176	784	588	470	392	336	294	261	235	188
ATP303008	1.5	XC	2.26	679	453	339	272	226	194	170	151	136	109
	3	XC	3.20	960	640	480	384	320	274	240	213	192	154
	5	VC	4.13	1239	826	620	496	413	354	310	275	248	198
	7	C	4.89	1466	978	733	587	489	419	367	326	293	235
	8	C	5.23	1568	1045	784	627	523	448	392	348	314	251

Classificazione in accordo con lo standard
ASABE S572.3 e la norma ISO25358

Classification according to ASABE S572.3 and ISO25358

Clasificación según ASABE S572.3 e ISO25358

	DIMENSIONE DELLE GOCCE DROP SIZE RATING DIMENSIONES DE LAS GOTAS
F	Fine - Fine - Fina
M	Media - Medium - Media
C	Grossa - Coarse - Gruesa
VC	Molto grossa - Very coarse - Muy gruesa
XC	Estremamente grossa - Extremely coarse - Extremadamente gruesa