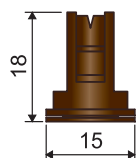


CFA

COMPACT FAN AIR



DIMENSIONI (mm) • SIZE (mm) • DIMENSIONES (mm)



UTILIZZO • USE • UTILIZACIÓN

Herbicides



Fungicides



Insecticides



- Angolo di spruzzo di 110°.
- Riduzione della deriva in presenza di vento superiore al 66%.
- Grosse gocce cariche di aria per assicurare una maggiore copertura della superficie fogliare.
- Permettono la sostituzione diretta degli ugelli di tipo Flat Fan.
- Completamente smontabile per una facile manutenzione.
- Stampato in resina acetaleica, ad alta stabilità chimica, che conferisce ottime caratteristiche di durata.
- Certificato ENTAM e ZNT.

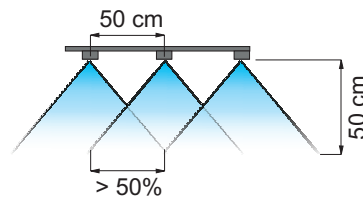
- 110° spray angle.
- More than 66% of drift reduction in case of windy weather conditions.
- Big drops containing a high amount of air ensuring larger coverage of leaf surfaces.
- They can directly replace Flat Fan nozzles.
- They can be fully removed for easier service.
- Made of molded acetal resin, a polymer ensuring high chemical stability and an exceptionally long useful life.
- Certified ENTAM e ZNT.

- Angulo de salida de 110° (CFA).
- Más de un 66% de reducción de la deriva en condiciones de viento.
- Gruesas gotas cargadas de aire para asegurar una mayor cobertura de la superficie.
- hojas.
- Permiten la sustitucion directa de las boquillas de tipo Flat Fan.
- Completamente desmontable para un facil mantenimiento.
- Moldeado en resina acetálica, material con alta estabilidad química, que otorga excepcionales características de duracion.
- Certificado ENTAM y ZNT.

<p>110° Spraying angle</p>	<p>Boom Treatment</p>	<p>ISO 10625 Colour coding</p>
<p>10 pcs. cod. + B1 Blister pack</p>	<p>402900xx Cap</p>	<p>Acetal Resin Material</p>



Copertura
Spray coverage
Cobertura



Distanza sulla barra
Boom spacing
Distancia en la barra

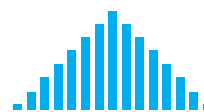


Diagramma di distribuzione ugello singolo
Single nozzle distribution pattern
Diagrama de distribución boquilla individual

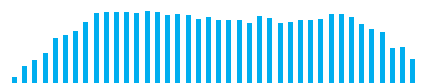
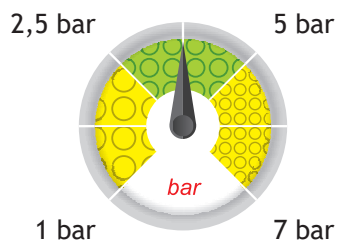
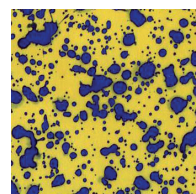


Diagramma di distribuzione su barra
Boom distribution pattern
Diagrama de distribución en la barra






Dimensione delle gocce su bersaglio
Drop size pattern on target
Dimensiones de las gotas en el blanco



CFA


COMPACT FAN AIR

COD. CODE CÓD.	 bar	 drop	 l/min	l/ha (spazio tra gli ugelli: 50 cm) l/ha (nozzle spacing: 50 cm) l/ha (espacio entre las boquillas: 50 cm)									
				4km/h	6km/h	8km/h	10km/h	12km/h	14km/h	16km/h	18km/h	20km/h	25km/h
CFA11001	1.5	VC	0.28	85	57	42	34	28	24	21	19	17	14
	3	C	0.40	120	80	60	48	40	34	30	27	24	19
	5	M	0.52	155	103	77	62	52	44	39	34	31	25
	7	M	0.61	183	122	92	73	61	52	46	41	37	29
	8	M	0.65	196	131	98	78	65	56	49	44	39	31
CFA110015	1.5	XC	0.42	127	85	64	51	42	36	32	28	25	20
	3	C	0.60	180	120	90	72	60	51	45	40	36	29
	5	C	0.77	232	155	116	93	77	66	58	52	46	37
	7	M	0.92	275	183	137	110	92	79	69	61	55	44
	8	M	0.98	294	196	147	118	98	84	73	65	59	47
CFA11002	1.5	XC	0.57	170	113	85	68	57	48	42	38	34	27
	3	VC	0.80	240	160	120	96	80	69	60	53	48	38
	5	C	1.03	310	207	155	124	103	89	77	69	62	50
	7	C	1.22	367	244	183	147	122	105	92	81	73	59
	8	C	1.31	392	261	196	157	131	112	98	87	78	63
CFA110025	1.5	XC	0.71	212	141	106	85	71	61	53	47	42	34
	3	VC	1.00	300	200	150	120	100	86	75	67	60	48
	5	C	1.29	387	258	194	155	129	111	97	86	77	62
	7	C	1.53	458	306	229	183	153	131	115	102	92	73
	8	C	1.63	490	327	245	196	163	140	122	109	98	78
CFA11003	1.5	XC	0.85	255	170	127	102	85	73	64	57	51	41
	3	VC	1.20	360	240	180	144	120	103	90	80	72	58
	5	C	1.55	465	310	232	186	155	133	116	103	93	74
	7	C	1.83	550	367	275	220	183	157	137	122	110	88
	8	C	1.96	588	392	294	235	196	168	147	131	118	94
CFA11004	1.5	XC	1.13	339	226	170	136	113	97	85	75	68	54
	3	VC	1.60	480	320	240	192	160	137	120	107	96	77
	5	C	2.07	620	413	310	248	207	177	155	138	124	99
	7	C	2.44	733	489	367	293	244	209	183	163	147	117
	8	C	2.61	784	523	392	314	261	224	196	174	157	125
CFA11005	1.5	XC	1.41	424	283	212	170	141	121	106	94	85	68
	3	VC	2.00	600	400	300	240	200	171	150	133	120	96
	5	C	2.58	775	516	387	310	258	221	194	172	155	124
	7	C	3.06	917	611	458	367	306	262	229	204	183	147
	8	C	3.27	980	653	490	392	327	280	245	218	196	157
CFA11006	1.5	XC	1.70	509	339	255	204	170	145	127	113	102	81
	3	C	2.40	720	480	360	288	240	206	180	160	144	115
	5	C	3.10	930	620	465	372	310	266	232	207	186	149
	7	C	3.67	1.100	733	550	440	367	314	275	244	220	176
	8	C	3.92	1.176	784	588	470	392	336	294	261	235	188
CFA11008	1.5	XC	2.26	679	453	339	272	226	194	170	151	136	109
	3	VC	3.20	960	640	480	384	320	274	240	213	192	154
	5	C	4.13	1239	826	620	496	413	354	310	275	248	198
	7	C	4.89	1466	978	733	587	489	419	367	326	293	235
	8	C	5.23	1568	1045	784	627	523	448	392	348	314	251

Classificazione in accordo con lo standard
ASABE S572.3 e la norma ISO25358

Classification according to ASABE S572.3 and ISO25358

Clasificación según ASABE S572.3 e ISO25358

	DIMENSIONE DELLE GOCCE DROP SIZE RATING DIMENSIONES DE LAS GOTAS
M	Media - Medium - Media
C	Grossa - Coarse - Gruesa
VC	Molto grossa - Very coarse - Muy gruesa
XC	Estremamente grossa - Extremely coarse - Extremadamente gruesa