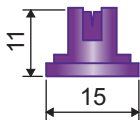


[LD] LOW DRIFT



DIMENSIONI (mm) • SIZE (mm) • DIMENSIONES (mm)



UTILIZZO • USE • UTILIZACIÓN

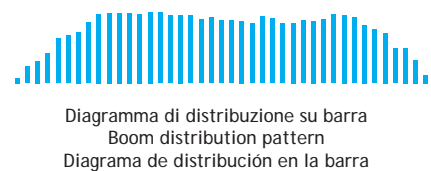
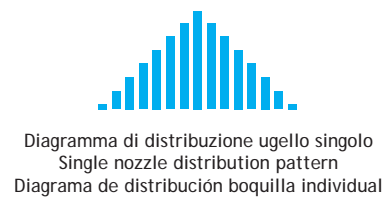
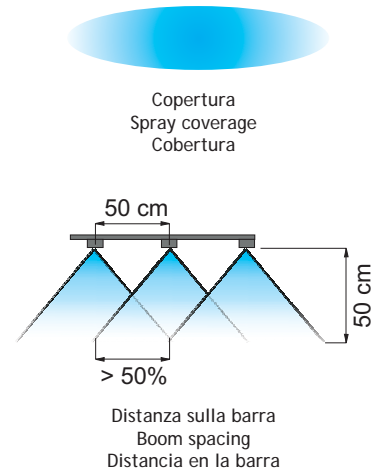


- Riducono la produzione di gocce fini, sensibili al vento, rispetto ai modelli Standard Flat Fan.
- Diminuiscono notevolmente l'effetto deriva in presenza di vento.
- Contribuiscono alla riduzione dell'impatto ambientale diminuendo la percentuale in volume di gocce esterne all'area da trattare e quindi la contaminazione per effetto deriva.
- Stampato in resina acetaleica, ad alta stabilità chimica, che conferisce ottime caratteristiche di durata.

- They reduce the production of small drops which are more sensitive to wind movement compared to the Standard Flat Fan models.
- They considerably reduce drift in windy conditions.
- They help reducing environmental impact by decreasing the percentage volume of driftable droplets, minimising off-target spray contamination.
- Made of molded acetal resin, a polymer ensuring high chemical stability and an exceptionally long useful life.

- Reducen la producción de gotas finas, sensibles al viento, con respecto a los modelos Standard Flat Fan.
- Disminuyen ampliamente el efecto deriva en presencia de viento.
- Contribuyen en la reducción del impacto ambiental disminuyendo el porcentaje en volumen de gotas fuera del área a tratar y como consecuencia también la contaminación por el efecto de la deriva.
- Moldeado en resina acetálica, material con alta estabilidad química, que otorga excepcionales características de duración.

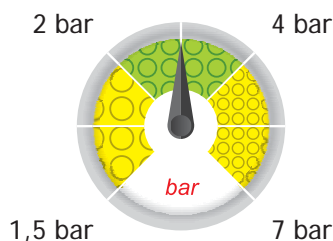
 80° Spraying angle	 110° Spraying angle	 Boom Treatment	 ISO 10625 Colour coding
 25 pcs. cod. + B2 Blister pack	 402900xx Cap	 Acetal Resin Material	



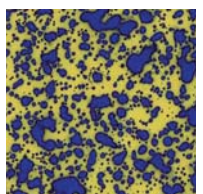
COD.
LDKEY







Chiave per apertura ugelli LD
Wrench for LD nozzle opening
Llave de apertura boquillas LD



Dimensione delle gocce su bersaglio
Drop size pattern on target
Dimensiones de las gotas en el blanco



[LD] LOW DRIFT

COD. 110° CODE 110° CÓD. 110°	 bar	 drop	 l/min	l/ha (spazio tra gli ugelli: 50 cm) l/ha (nozzle spacing: 50 cm) l/ha (espacio entre las boquillas: 50 cm)										 drop	COD. 80° CODE 80° CÓD. 80°
				4 km/h	6 km/h	8 km/h	10 km/h	12 km/h	14 km/h	16 km/h	18 km/h	20 km/h	25 km/h		
LD11001	1.5	F	0.28	85	57	42	34	28	24	21	19	17	14	F	LD08001
	3	F	0.40	120	80	60	48	40	34	30	27	24	19	F	
	4	F	0.46	139	92	69	55	46	40	35	31	28	22	F	
	5	VF	0.52	155	103	77	62	52	44	39	34	31	25	F	
	7	VF	0.61	183	122	92	73	61	52	46	41	37	29	F	
LD110015	1.5	F	0.42	127	85	64	51	42	36	32	28	25	20	F	LD080015
	3	F	0.60	180	120	90	72	60	51	45	40	36	29	F	
	4	F	0.69	208	139	104	83	69	59	52	46	42	33	F	
	5	F	0.77	232	155	116	93	77	66	58	52	46	37	F	
	7	F	0.92	275	183	137	110	92	79	69	61	55	44	F	
LD11002	1.5	M	0.57	170	113	85	68	57	48	42	38	34	27	M	LD08002
	3	F	0.80	240	160	120	96	80	69	60	53	48	38	F	
	4	F	0.92	277	185	139	111	92	79	69	62	55	44	F	
	5	F	1.03	310	207	155	124	103	89	77	69	62	50	F	
	7	F	1.22	367	244	183	147	122	105	92	81	73	59	F	
LD110025	1.5	M	0.71	212	141	106	85	71	61	53	47	42	34	---	NA
	3	M	1.00	300	200	150	120	100	86	75	67	60	48		
	4	M	1.15	346	231	173	139	115	99	87	77	69	55		
	5	M	1.29	387	258	194	155	129	111	97	86	77	62		
	7	M	1.53	458	306	229	183	153	131	115	102	92	73		
LD11003	1.5	M	0.85	255	170	127	102	85	73	64	57	51	41	M	LD08003
	3	M	1.20	360	240	180	144	120	103	90	80	72	58	M	
	4	M	1.39	416	277	208	166	139	119	104	92	83	67	M	
	5	M	1.55	465	310	232	186	155	133	116	103	93	74	M	
	7	M	1.83	550	367	275	220	183	157	137	122	110	88	M	
LD11004	1.5	M	1.13	339	226	170	136	113	97	85	75	68	54	M	LD08004
	3	M	1.60	480	320	240	192	160	137	120	107	96	77	M	
	4	M	1.85	554	370	277	222	185	158	139	123	111	89	M	
	5	M	2.07	620	413	310	248	207	177	155	138	124	99	M	
	7	M	2.44	733	489	367	293	244	209	183	163	147	117	M	
LD11005	1.5	C	1.41	424	283	212	170	141	121	106	94	85	68	C	LD08005
	3	C	2.00	600	400	300	240	200	171	150	133	120	96	C	
	4	M	2.31	693	462	346	277	231	198	173	154	139	111	C	
	5	M	2.58	775	516	387	310	258	221	194	172	155	124	C	
	7	M	3.06	917	611	458	367	306	262	229	204	183	147	M	

Classificazione in accordo con lo standard
ASABE S572.3 e la norma ISO25358

Classification according to ASABE S572.3 and ISO25358

Clasificación según ASABE S572.3 e ISO25358

	DIMENSIONE DELLE GOCCE DROP SIZE RATING DIMENSIONES DE LAS GOTAS
VF	Molto fine - Very fine - Muy fina
F	Fine - Fine - Fina
M	Media - Medium - Media
C	Grossa - Coarse - Gruesa

