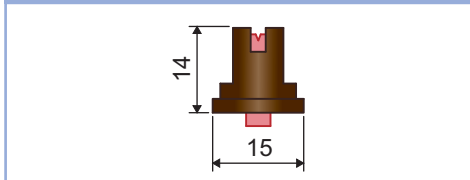


LDC

LOW DRIFT CERAMIC



DIMENSIONI (mm) • SIZE (mm) • DIMENSIONES (mm)



UTILIZZO • USE • UTILIZACIÓN

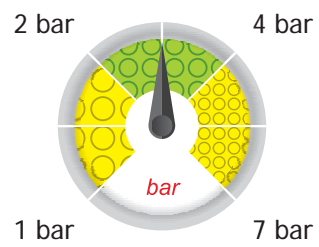
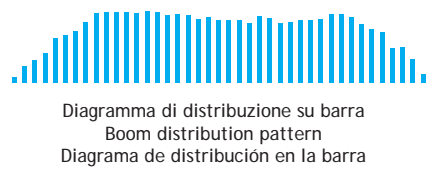
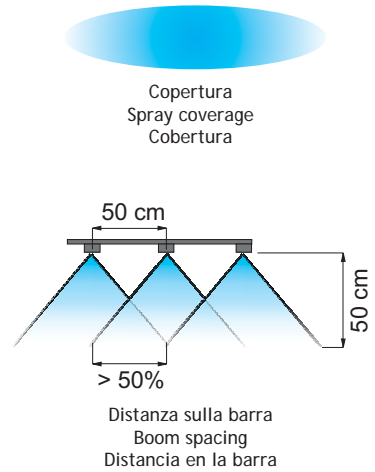
| | | |
|------------------------------------|------------------------------------|--------------------------------------|
| <p>Herbicides Suitable for</p> | <p>Fungicides Suitable for</p> | <p>Insecticides Suitable for</p> |
|------------------------------------|------------------------------------|--------------------------------------|

- Riducono la produzione di gocce fini, sensibili al vento, rispetto ai modelli Standard Flat Fan.
- Diminuiscono notevolmente l'effetto deriva in presenza di vento.
- Contribuiscono alla riduzione dell'impatto ambientale diminuendo la percentuale in volume di gocce esterne all'area da trattare e quindi la contaminazione per effetto deriva.
- Il corpo esterno stampato in resina acetaleica, unito all'inserto in ceramica, conferisce eccezionali caratteristiche di durata.
- Certificato ENAMA ed ENTAM.

- They reduce the production of small drops which are more sensitive to wind movement compared to the Standard Flat Fan models.
- They considerably reduce drift in windy conditions.
- They help reducing environmental impact by decreasing the percentage volume of driftable droplets, minimising off-target spray contamination.
- Their acetal resin molded outer body, together with their ceramic insert, ensures an exceptionally long useful life.
- ENTAM and ENAMA certified.




- Reducen la producción de gotas finas, sensibles al viento, con respecto a los modelos Standard Flat Fan.
- Disminuyen ampliamente el efecto deriva en presencia de viento.
- Contribuyen en la reducción del impacto ambiental disminuyendo el porcentaje en volumen de gotas fuera del área a tratar y como consecuencia también la contaminación por el efecto de la deriva.
- El cuerpo exterior moldeado en resina acetálica, junto al inserto de cerámica, le otorga excepcionales características de durabilidad.
- Certificado ENAMA y ENTAM.

| | | |
|---|---------------------------|------------------------------------|
| <p>110° Spraying angle</p> | <p>Boom Treatment</p> | <p>ISO 10625 Colour coding</p> |
| <p>10 pcs. cod. + B1 Blister pack</p> | <p>402900xx Cap</p> | <p>Ceramic Material</p> |



LDC

LOW DRIFT CERAMIC

| COD. CODE CÓD. |  bar |  drop |  l/min | l/ha (spazio tra gli ugelli: 50 cm) l/ha (nozzle spacing: 50 cm) l/ha (espacio entre las boquillas: 50 cm) | | | | | | | | | |
|----------------------|--|---|--|--|--------|--------|---------|---------|---------|---------|---------|---------|---------|
| | | | | 4 km/h | 6 km/h | 8 km/h | 10 km/h | 12 km/h | 14 km/h | 16 km/h | 18 km/h | 20 km/h | 25 km/h |
| LDC11001 | 1 | M | 0.23 | 69 | 46 | 35 | 28 | 23 | 20 | 17 | 15 | 14 | 11 |
| | 3 | F | 0.40 | 120 | 80 | 60 | 48 | 40 | 34 | 30 | 27 | 24 | 19 |
| | 4 | F | 0.46 | 139 | 92 | 69 | 55 | 46 | 40 | 35 | 31 | 28 | 22 |
| | 5 | F | 0.52 | 155 | 103 | 77 | 62 | 52 | 44 | 39 | 34 | 31 | 25 |
| LDC110015 | 7 | F | 0.61 | 183 | 122 | 92 | 73 | 61 | 52 | 46 | 41 | 37 | 29 |
| | 1 | M | 0.35 | 104 | 69 | 52 | 42 | 35 | 30 | 26 | 23 | 21 | 17 |
| | 3 | F | 0.60 | 180 | 120 | 90 | 72 | 60 | 51 | 45 | 40 | 36 | 29 |
| | 4 | F | 0.69 | 208 | 139 | 104 | 83 | 69 | 59 | 52 | 46 | 42 | 33 |
| LDC11002 | 5 | F | 0.77 | 232 | 155 | 116 | 93 | 77 | 66 | 58 | 52 | 46 | 37 |
| | 7 | F | 0.92 | 275 | 183 | 137 | 110 | 92 | 79 | 69 | 61 | 55 | 44 |
| | 1 | M | 0.46 | 139 | 92 | 69 | 55 | 46 | 40 | 35 | 31 | 28 | 22 |
| | 3 | F | 0.80 | 240 | 160 | 120 | 96 | 80 | 69 | 60 | 53 | 48 | 38 |
| LDC110025 | 4 | F | 0.92 | 277 | 185 | 139 | 111 | 92 | 79 | 69 | 62 | 55 | 44 |
| | 5 | F | 1.03 | 310 | 207 | 155 | 124 | 103 | 89 | 77 | 69 | 62 | 50 |
| | 7 | F | 1.22 | 367 | 244 | 183 | 147 | 122 | 105 | 92 | 81 | 73 | 59 |
| | 1 | M | 0.58 | 173 | 115 | 87 | 69 | 58 | 49 | 43 | 38 | 35 | 28 |
| LDC11003 | 3 | M | 1.00 | 300 | 200 | 150 | 120 | 100 | 86 | 75 | 67 | 60 | 48 |
| | 4 | M | 1.15 | 346 | 231 | 173 | 139 | 115 | 99 | 87 | 77 | 69 | 55 |
| | 5 | M | 1.29 | 387 | 258 | 194 | 155 | 129 | 111 | 97 | 86 | 77 | 62 |
| | 7 | M | 1.53 | 458 | 306 | 229 | 183 | 153 | 131 | 115 | 102 | 92 | 73 |
| LDC11003 | 1 | C | 0.69 | 208 | 139 | 104 | 83 | 69 | 59 | 52 | 46 | 42 | 33 |
| | 3 | M | 1.20 | 360 | 240 | 180 | 144 | 120 | 103 | 90 | 80 | 72 | 58 |
| | 4 | M | 1.39 | 416 | 277 | 208 | 166 | 139 | 119 | 104 | 92 | 83 | 67 |
| | 5 | M | 1.55 | 465 | 310 | 232 | 186 | 155 | 133 | 116 | 103 | 93 | 74 |
| LDC11004 | 7 | M | 1.83 | 550 | 367 | 275 | 220 | 183 | 157 | 137 | 122 | 110 | 88 |
| | 1 | C | 0.92 | 277 | 185 | 139 | 111 | 92 | 79 | 69 | 62 | 55 | 44 |
| | 3 | M | 1.60 | 480 | 320 | 240 | 192 | 160 | 137 | 120 | 107 | 96 | 77 |
| | 4 | M | 1.85 | 554 | 370 | 277 | 222 | 185 | 158 | 139 | 123 | 111 | 89 |
| LDC11005 | 5 | M | 2.07 | 620 | 413 | 310 | 248 | 207 | 177 | 155 | 138 | 124 | 99 |
| | 7 | M | 2.44 | 733 | 489 | 367 | 293 | 244 | 209 | 183 | 163 | 147 | 117 |
| | 1 | XC | 1.15 | 346 | 231 | 173 | 139 | 115 | 99 | 87 | 77 | 69 | 55 |
| | 3 | C | 2.00 | 600 | 400 | 300 | 240 | 200 | 171 | 150 | 133 | 120 | 96 |
| LDC11005 | 4 | C | 2.31 | 693 | 462 | 346 | 277 | 231 | 198 | 173 | 154 | 139 | 111 |
| | 5 | C | 2.58 | 775 | 516 | 387 | 310 | 258 | 221 | 194 | 172 | 155 | 124 |
| | 7 | C | 3.06 | 917 | 611 | 458 | 367 | 306 | 262 | 229 | 204 | 183 | 147 |
| | 1 | XC | 1.39 | 416 | 277 | 208 | 166 | 139 | 119 | 104 | 92 | 83 | 67 |
| LDC11006 | 3 | C | 2.40 | 720 | 480 | 360 | 288 | 240 | 206 | 180 | 160 | 144 | 115 |
| | 4 | C | 2.77 | 831 | 554 | 416 | 333 | 277 | 238 | 208 | 185 | 166 | 133 |
| | 5 | C | 3.10 | 930 | 620 | 465 | 372 | 310 | 266 | 232 | 207 | 186 | 149 |
| | 7 | C | 3.67 | 1.100 | 733 | 550 | 440 | 367 | 314 | 275 | 244 | 220 | 176 |

Classificazione in accordo con lo standard
ASABE S572.3 e la norma ISO25358

Classification according to ASABE S572.3 and ISO25358

Clasificación según ASABE S572.3 e ISO25358

|  | DIMENSIONE DELLE GOCCE DROP SIZE RATING DIMENSIONES DE LAS GOTAS |
|---|--|
| F | Fine - Fine - Fina |
| M | Media - Medium - Media |
| C | Grossa - Coarse - Gruesa |
| XC | Estremamente grossa - Extremely coarse - Extremadamente gruesa |