

[TFA] TWIN FAN AIR



DIMENSIONI (mm) • SIZE (mm) • DIMENSIONES (mm)

UTILIZZO • USE • UTILIZACIÓN

Herbicides
Suitable for

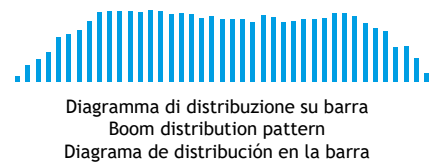
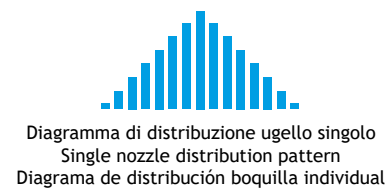
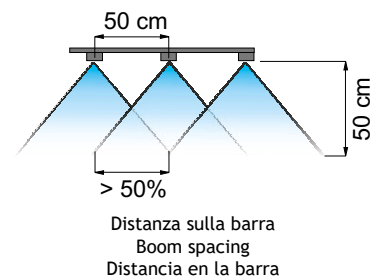
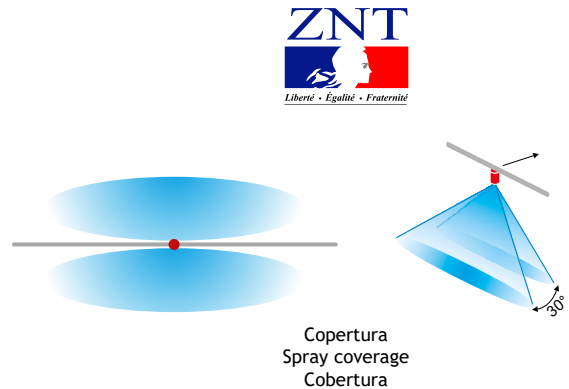
Fungicides
Suitable for

Insecticides
Suitable for

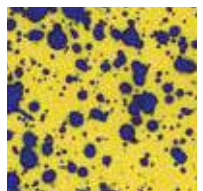
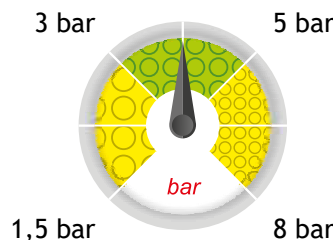
- La struttura suddivisa in tre pezzi consente una pulizia ottimale dell'ugello.
- Offrono una buona copertura, migliorando la penetrazione ed il deposito dei prodotti.
- Gli ugelli Twin Fan Air hanno la stessa portata degli ugelli Twin Fan Standard, ma le goccioline più grandi garantiscono la riduzione della deriva.
- Ugello a doppia uscita in un solo corpo.
- Adatto per essere utilizzato su barre per trattamenti di patate, cipolle e cereali.
- La filtrazione dev'essere calcolata dividendo a metà quella di un ugello standard.
- Stampato in resina acetaleica, ad alta stabilità chimica, che conferisce ottime caratteristiche di durata.
- Certificato ZNT.

- Their three-piece structure allows for easier cleaning operations.
- They ensure a good coverage and enhance product penetration and settling.
- Twin Fan Air nozzles have the same rate as Twin Fan Standard nozzles but spray larger drops and therefore ensure reduced drift.
- Twin nozzles - two spraying points in one body.
- Suitable for boom spraying, especially onto potatoes, onions and grains.
- Filtration should be half the value of a standard nozzle.
- Made of molded acetal resin, a polymer ensuring high chemical stability and an exceptionally long useful life.
- ZNT certified.

- La struttura suddivisa in tre pezzi permette una pulizia ottima della boquilla.
- Ofrecen una buena cobertura, mejorando la penetración y el depósito de los productos.
- Las boquillas Twin Fan Air tienen el mismo caudal de las boquillas Twin Fan Standard, pero las gotas más grandes garantizan la reducción de la deriva.
- Boquilla de doble salida en un solo cuerpo.
- Adecuada para utilizar en barras para tratamientos de papas, cebollas y cereales.
- El filtrado se debe calcular dividiendo a la mitad el de una boquilla estándar.
- Moldeado en resina acetálica, material con alta estabilidad química, que otorga excepcionales características de duración.
- Certificado ZNT.






 90° Spraying angle	 Boom Treatment	 ISO 10625 Colour coding
 10 pcs. cod. B1 Blister pack	 402901xx Cap	 Acetal Resin Material



[TFA]

TWIN FAN AIR

COD. CODE CÓD.	 bar	 drop	 l/min	l/ha (spazio tra gli ugelli: 50 cm) l/ha (nozzle spacing: 50 cm) l/ha (espacio entre las boquillas: 50 cm)									
				4 km/h	6 km/h	8 km/h	10 km/h	12 km/h	14 km/h	16 km/h	18 km/h	20 km/h	25 km/h
				TFA11002	1.5	XC	0.57	170	113	85	68	57	48
2	XC	0.65	196		131	98	78	65	56	49	44	39	31
3	VC	0.80	240		160	120	96	80	69	60	53	48	38
4	C	0.92	277		185	139	111	92	79	69	62	55	44
6	C	1.13	339		226	170	136	113	97	85	75	68	54
TFA110025	8	M	1.31	392	261	196	157	131	112	98	87	78	63
	1.5	UC	0.71	212	141	106	85	71	61	53	47	42	34
	2	UC	0.82	245	163	122	98	82	70	61	54	49	39
	3	XC	1.00	300	200	150	120	100	86	75	67	60	48
	4	XC	1.15	346	231	173	139	115	99	87	77	69	55
TFA11003	6	C	1.41	424	283	212	170	141	121	106	94	85	68
	8	C	1.63	490	327	245	196	163	140	122	109	98	78
	1.5	UC	0.85	255	170	127	102	85	73	64	57	51	41
	2	XC	0.98	294	196	147	118	98	84	73	65	59	47
	3	XC	1.20	360	240	180	144	120	103	90	80	72	58
TFA11004	4	XC	1.39	416	277	208	166	139	119	104	92	83	67
	6	C	1.70	509	339	255	204	170	145	127	113	102	81
	8	C	1.96	588	392	294	235	196	168	147	131	118	94
	1.5	UC	1.13	339	226	170	136	113	97	85	75	68	54
	2	UC	1.31	392	261	196	157	131	112	98	87	78	63
TFA11005	3	XC	1.60	480	320	240	192	160	137	120	107	96	77
	4	XC	1.85	554	370	277	222	185	158	139	123	111	89
	6	VC	2.26	679	453	339	272	226	194	170	151	136	109
	8	C	2.61	784	523	392	314	261	224	196	174	157	125
	1.5	XC	1.41	424	283	212	170	141	121	106	94	85	68
TFA11005	2	XC	1.63	490	327	245	196	163	140	122	109	98	78
	3	VC	2.00	600	400	300	240	200	171	150	133	120	96
	4	C	2.31	693	462	346	277	231	198	173	154	139	111
	6	C	2.83	849	566	424	339	283	242	212	189	170	136
TFA11005	8	C	3.27	980	653	490	392	327	280	245	218	196	157

Classificazione in accordo con lo standard
ASABE S572.3 e la norma ISO25358

Classification according to ASABE S572.3 and ISO25358

Clasificación según ASABE S572.3 e ISO25358

	DIMENSIONE DELLE GOCCE DROP SIZE RATING DIMENSIONES DE LAS GOTAS
M	Media - Medium - Media
C	Grossa - Coarse - Gruesa
VC	Molto grossa - Very coarse - Muy gruesa
XC	Estremamente grossa - Extremely coarse - Extremadamente gruesa
UC	Ultra grossa - Ultra coarse - Ultra gruesa

