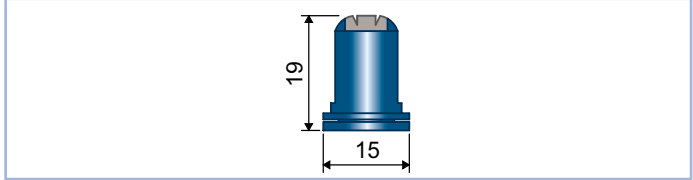


# TFLD

## TWIN FAN LOW DRIFT



### DIMENSIONI (mm) • SIZE (mm) • DIMENSIONES (mm)



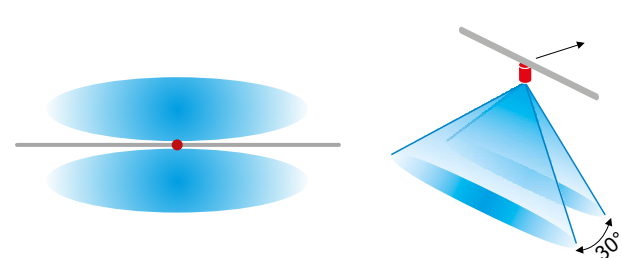
### UTILIZZO • USE • UTILIZACIÓN



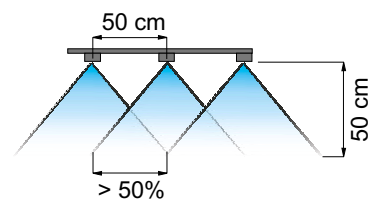
- Offrono una buona copertura, migliorando la penetrazione ed il deposito dei prodotti.
- Gli ugelli Twin Fan Low Drift hanno la stessa portata degli ugelli Twin Fan Standard, ma le goccioline più grandi garantiscono la riduzione della deriva.
- Ugello a doppia uscita in un solo corpo.
- Adatto per essere utilizzato su barre per trattamenti di patate, cipolle e cereali.
- La filtrazione dev'essere calcolata dividendo a metà quella di un ugello standard.
- Stampato in resina acetica, ad alta stabilità chimica, che conferisce ottime caratteristiche di durata.

- They ensure a good coverage and enhance product penetration and settling.
- Twin Fan Low Drift nozzles have the same rate as Twin Fan Standard nozzles but spray larger drops and therefore ensure reduced drift.
- Twin nozzles - two spraying points in one body.
- Suitable for boom spraying, especially onto potatoes, onions and grains.
- Filtration should be half the value of a standard nozzle.
- Made of molded acetal resin, a polymer ensuring high chemical stability and an exceptionally long useful life.

- Ofrecen una buena cobertura, mejorando la penetración y el depósito de los productos.
- Las boquillas Twin Fan Low Drift tienen el mismo caudal de las boquillas Twin Fan Standard, pero las gotas más grandes garantizan la reducción de la deriva.
- Boquilla de doble salida en un solo cuerpo.
- Adecuada para utilizar en barras para tratamientos de papas, cebollas y cereales.
- El filtrado se debe calcular dividiendo a la mitad el de una boquilla estándar.
- Moldeado en acetal resina, material con alta estabilidad química, que otorga excepcionales características de duración.



Copertura  
Spray coverage  
Cobertura



Distanza sulla barra  
Boom spacing  
Distancia en la barra

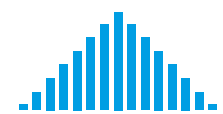


Diagramma di distribuzione ugello singolo  
Single nozzle distribution pattern  
Diagrama de distribución boquilla individual

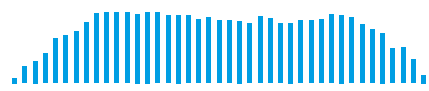
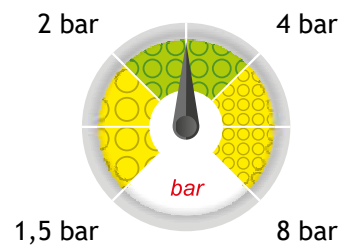


Diagramma di distribuzione su barra  
Boom distribution pattern  
Diagrama de distribución en la barra




 90° Spraying angle	 Boom Treatment	 P W M PWM System	 ISO 10625 Colour coding
 10 pcs. cod. + B1 Blister pack	 402901xx Cap	 Acetal Resin Material	



Dimensione delle gocce su bersaglio  
Drop size pattern on target  
Dimensiones de las gotas en el blanco

# TFLD


## TWIN FAN LOW DRIFT

COD. CODE CÓD.	 bar	 drop	 l/min	l/ha (spazio tra gli ugelli: 50 cm) l/ha (nozzle spacing: 50 cm) l/ha (espacio entre las boquillas: 50 cm)									
				4 km/h	6 km/h	8 km/h	10 km/h	12 km/h	14 km/h	16 km/h	18 km/h	20 km/h	25 km/h
TFLD11002	1.5	<b>XC</b>	0.57	170	113	85	68	57	48	42	38	34	27
	2	<b>VC</b>	0.65	196	131	98	78	65	56	49	44	39	31
	3	<b>C</b>	0.80	240	160	120	96	80	69	60	53	48	38
	4	<b>C</b>	0.92	277	185	139	111	92	79	69	62	55	44
	6	<b>M</b>	1.13	339	226	170	136	113	97	85	75	68	54
TFLD110025	1.5	<b>XC</b>	0.71	212	141	106	85	71	61	53	47	42	34
	2	<b>XC</b>	0.82	245	163	122	98	82	70	61	54	49	39
	3	<b>VC</b>	1.00	300	200	150	120	100	86	75	67	60	48
	4	<b>C</b>	1.15	346	231	173	139	115	99	87	77	69	55
	6	<b>C</b>	1.41	424	283	212	170	141	121	106	94	85	68
TFLD11003	1.5	<b>XC</b>	0.85	255	170	127	102	85	73	64	57	51	41
	2	<b>XC</b>	0.98	294	196	147	118	98	84	73	65	59	47
	3	<b>VC</b>	1.20	360	240	180	144	120	103	90	80	72	58
	4	<b>VC</b>	1.39	416	277	208	166	139	119	104	92	83	67
	6	<b>C</b>	1.70	509	339	255	204	170	145	127	113	102	81
TFLD11004	1.5	<b>XC</b>	1.13	339	226	170	136	113	97	85	75	68	54
	2	<b>XC</b>	1.31	392	261	196	157	131	112	98	87	78	63
	3	<b>VC</b>	1.60	480	320	240	192	160	137	120	107	96	77
	4	<b>VC</b>	1.85	554	370	277	222	185	158	139	123	111	89
	6	<b>C</b>	2.26	679	453	339	272	226	194	170	151	136	109
TFLD11005	1.5	<b>XC</b>	1.41	424	283	212	170	141	121	106	94	85	68
	2	<b>VC</b>	1.63	490	327	245	196	163	140	122	109	98	78
	3	<b>VC</b>	2.00	600	400	300	240	200	171	150	133	120	96
	4	<b>VC</b>	2.31	693	462	346	277	231	198	173	154	139	111
	6	<b>C</b>	2.83	849	566	424	339	283	242	212	189	170	136
	8	<b>C</b>	3.27	980	653	490	392	327	280	245	218	196	157

Classificazione in accordo con lo standard  
ASABE S572.3 e la norma ISO25358

Classification according to ASABE S572.3 and ISO25358

Clasificación según ASABE S572.3 e ISO25358

	DIMENSIONE DELLE GOCCE DROP SIZE RATING DIMENSIONES DE LAS GOTAS
<b>M</b>	Media-Medium-Media
<b>C</b>	Grossa-Coarse-Gruesa
<b>VC</b>	Molto grossa-Very coarse-Muy gruesa
<b>XC</b>	Estremamente grossa-Extremely coarse-Extremadamente gruesa

