

TFS

TWIN FAN STANDARD



DIMENSIONI (mm) • SIZE (mm) • DIMENSIONES (mm)

UTILIZZO • USE • UTILIZACIÓN

Herbicides
Suitable for

Fungicides
Suitable for

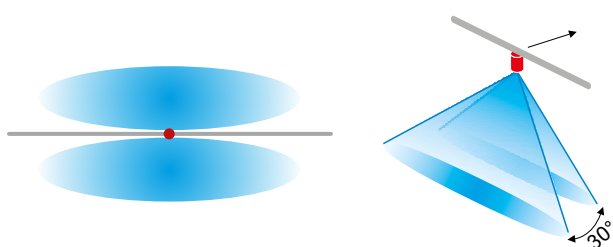
Insecticides
Suitable for

- Offrono una buona copertura, migliorando la penetrazione ed il deposito dei prodotti.
- Gli ugelli hanno la stessa portata degli ugelli Standard Fan, ma le goccioline sono più piccole e quindi si ottiene una copertura migliore.
- Ugello a doppia uscita in un solo corpo.
- La filtrazione dev'essere calcolata dividendo a metà quella di un ugello standard.
- Stampato in resina acetica, ad alta stabilità chimica, che conferisce ottime caratteristiche di durata.

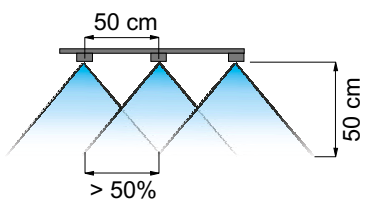
- They ensure a good coverage and enhance product penetration and settling.
- They have the same rate as Standard Fan nozzles but spray smaller drops and therefore ensure improved coverage.
- Twin nozzles - two spraying points in one body.
- Filtration should be half the value of a standard nozzle.
- Made of molded acetal resin, a polymer ensuring high chemical stability and an exceptionally long useful life.

- Ofrecen una buena cobertura, mejorando la penetración y el depósito de los productos.
- Las boquillas tienen el mismo caudal que las boquillas Standard Fan, pero las gotas son más pequeñas y por lo tanto se obtiene una mejor cobertura.
- Boquilla de doble salida en un solo cuerpo.
- El filtrado se debe calcular dividiendo a la mitad el de una boquilla estándar.
- Moldeado en resina acetálica, material con alta estabilidad química, que otorga excepcionales características de duración.

<p>90°</p> <p>Spraying angle</p>	<p>Boom</p> <p>Treatment</p>	<p>ISO 10625</p> <p>Colour coding</p>
<p>10 pcs.</p> <p>Blister pack</p>	<p>402901xx</p> <p>Cap</p>	<p>Acetal Resin</p> <p>Material</p>



Copertura
Spray coverage
Cobertura



Distanza sulla barra
Boom spacing
Distancia en la barra

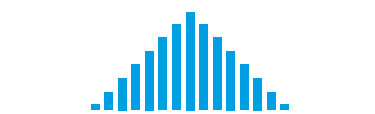


Diagramma di distribuzione ugello singolo
Single nozzle distribution pattern
Diagrama de distribución boquilla individual

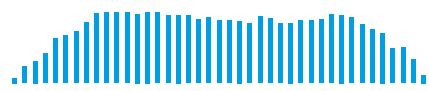
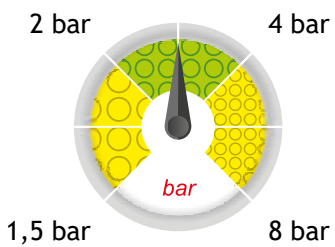
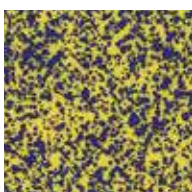


Diagramma di distribuzione su barra
Boom distribution pattern
Diagrama de distribución en la barra






Dimensione delle gocce su bersaglio
Drop size pattern on target
Dimensiones de las gotas en el blanco



TFS


TWIN FAN STANDARD

COD. CODE CÓD.	 bar	 drop	 l/min	l/ha (spazio tra gli ugelli: 50 cm) l/ha (nozzle spacing: 50 cm) l/ha (espacio entre las boquillas: 50 cm)									
				4 km/h	6 km/h	8 km/h	10 km/h	12 km/h	14 km/h	16 km/h	18 km/h	20 km/h	25 km/h
TFS11002	1.5	F	0.57	170	113	85	68	57	48	42	38	34	27
	2	F	0.65	196	131	98	78	65	56	49	44	39	31
	3	F	0.80	240	160	120	96	80	69	60	53	48	38
	4	F	0.92	277	185	139	111	92	79	69	62	55	44
	6	VF	1.13	339	226	170	136	113	97	85	75	68	54
	8	VF	1.31	392	261	196	157	131	112	98	87	78	63
TFS11003	1.5	M	0.85	255	170	127	102	85	73	64	57	51	41
	2	M	0.98	294	196	147	118	98	84	73	65	59	47
	3	F	1.20	360	240	180	144	120	103	90	80	72	58
	4	F	1.39	416	277	208	166	139	119	104	92	83	67
	6	F	1.70	509	339	255	204	170	145	127	113	102	81
	8	F	1.96	588	392	294	235	196	168	147	131	118	94
TFS11004	1.5	M	1.13	339	226	170	136	113	97	85	75	68	54
	2	M	1.31	392	261	196	157	131	112	98	87	78	63
	3	F	1.60	480	320	240	192	160	137	120	107	96	77
	4	F	1.85	554	370	277	222	185	158	139	123	111	89
	6	F	2.26	679	453	339	272	226	194	170	151	136	109
	8	F	2.61	784	523	392	314	261	224	196	174	157	125
TFS11005	1.5	M	1.41	424	283	212	170	141	121	106	94	85	68
	2	M	1.63	490	327	245	196	163	140	122	109	98	78
	3	M	2.00	600	400	300	240	200	171	150	133	120	96
	4	M	2.31	693	462	346	277	231	198	173	154	139	111
	6	F	2.83	849	566	424	339	283	242	212	189	170	136
	8	F	3.27	980	653	490	392	327	280	245	218	196	157

Classificazione in accordo con lo standard
ASABE S572.3 e la norma ISO25358

Classification according to ASABE S572.3 and ISO25358

Clasificación según ASABE S572.3 e ISO25358

	DIMENSIONE DELLE GOCCE DROP SIZE RATING DIMENSIONES DE LAS GOTAS
VF	Molto fine - Very fine - Muy fina
F	Fine - Fine - Fina
M	Media - Medium - Media

