

# WRC

## WIDE RANGE CERAMIC



**DIMENSIONI (mm) • SIZE (mm) • DIMENSIONES (mm)**

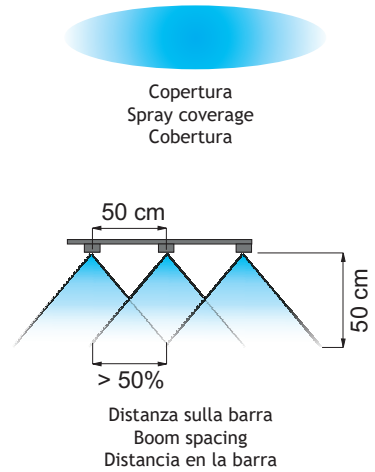
**UTILIZZO • USE • UTILIZACIÓN**

Herbicides  
Suitable for

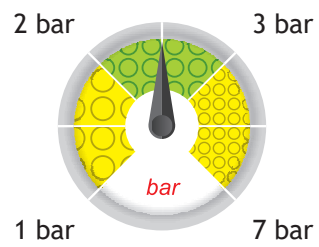
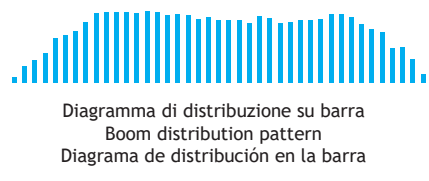
Fungicides  
Suitable for

Insecticides  
Suitable for

- Copertura costante in tutto l'intervallo delle pressioni.
  - Angolo costante di 110° al variare della pressione già da 1 bar.
  - Riduce la deriva a pressioni di 1 - 1,5 bar e garantisce un'eccellente copertura già a 1,5 - 2 bar.
  - Il corpo esterno stampato in resina acetilica, unito all'inserto in ceramica conferisce eccezionali caratteristiche di durata.
  - Certificato ENAMA ed ENTAM.
- Smooth coverage within a wide pressure range.
  - Steady 110° jet angle as pressure changes, from 1 bar.
  - They reduce drift at 1 - 1.5 bar and ensure a good coverage starting from just 1.5 - 2 bar.
  - Their acetal resin molded outer body, together with their ceramic insert, ensures an exceptionally long useful life.
  - ENTAM and ENAMA certified.
- Cobertura constante en un amplio rango de presiones.
  - Ángulo constante de 110° al variar la presión ya desde 1 bar.
  - Reduce la deriva con presiones de 1 - 1,5 bar y garantiza una excelente cobertura a 1,5 - 2 bar.
  - El cuerpo exterior moldeado en resina acetálica, junto al inserto de cerámica, le otorga excepcionales características de durabilidad.
  - Certificado ENAMA y ENTAM.






<p>110° Spraying angle</p>	<p>Boom Treatment</p>	<p>ISO 10625 Colour coding</p>
<p>10 pcs. cod. + B1 Blister pack</p>	<p>402900xx Cap</p>	<p>Ceramic Material</p>



Dimensione delle gocce su bersaglio  
Drop size pattern on target  
Dimensiones de las gotas en el blanco

# WRC

## WIDE RANGE CERAMIC

COD. CODE CÓD.	 bar	 drop	 l/min	l/ha (spazio tra gli ugelli: 50 cm) l/ha (nozzle spacing: 50 cm) l/ha (espacio entre las boquillas: 50 cm)									
				4 km/h	6 km/h	8 km/h	10 km/h	12 km/h	14 km/h	16 km/h	18 km/h	20 km/h	25 km/h
WRC110015	1	F	0.35	104	69	52	42	35	30	26	23	21	17
	2	F	0.49	147	98	73	59	49	42	37	33	29	24
	3	F	0.60	180	120	90	72	60	51	45	40	36	29
	5	F	0.77	232	155	116	93	77	66	58	52	46	37
	7	VF	0.92	275	183	137	110	92	79	69	61	55	44
WRC11002	1	F	0.46	139	92	69	55	46	40	35	31	28	22
	2	F	0.65	196	131	98	78	65	56	49	44	39	31
	3	F	0.80	240	160	120	96	80	69	60	53	48	38
	5	F	1.03	310	207	155	124	103	89	77	69	62	50
	7	F	1.22	367	244	183	147	122	105	92	81	73	59
WRC110025	1	M	0.58	173	115	87	69	58	49	43	38	35	28
	2	F	0.82	245	163	122	98	82	70	61	54	49	39
	3	F	1.00	300	200	150	120	100	86	75	67	60	48
	5	F	1.29	387	258	194	155	129	111	97	86	77	62
	7	F	1.53	458	306	229	183	153	131	115	102	92	73
WRC11003	1	M	0.69	208	139	104	83	69	59	52	46	42	33
	2	F	0.98	294	196	147	118	98	84	73	65	59	47
	3	F	1.20	360	240	180	144	120	103	90	80	72	58
	5	F	1.55	465	310	232	186	155	133	116	103	93	74
	7	F	1.83	550	367	275	220	183	157	137	122	110	88
WRC11004	1	M	0.92	277	185	139	111	92	79	69	62	55	44
	2	M	1.31	392	261	196	157	131	112	98	87	78	63
	3	F	1.60	480	320	240	192	160	137	120	107	96	77
	5	F	2.07	620	413	310	248	207	177	155	138	124	99
	7	F	2.44	733	489	367	293	244	209	183	163	147	117
WRC11005	1	M	1.15	346	231	173	139	115	99	87	77	69	55
	2	M	1.63	490	327	245	196	163	140	122	109	98	78
	3	F	2.00	600	400	300	240	200	171	150	133	120	96
	5	F	2.58	775	516	387	310	258	221	194	172	155	124
	7	F	3.06	917	611	458	367	306	262	229	204	183	147
WRC11006	1	M	1.39	416	277	208	166	139	119	104	92	83	67
	2	M	1.96	588	392	294	235	196	168	147	131	118	94
	3	M	2.40	720	480	360	288	240	206	180	160	144	115
	5	M	3.10	930	620	465	372	310	266	232	207	186	149
	7	M	3.67	1.100	733	550	440	367	314	275	244	220	176
WRC11008	1	C	1.85	554	370	277	222	185	158	139	123	111	89
	2	M	2.61	784	523	392	314	261	224	196	174	157	125
	3	M	3.20	960	640	480	384	320	274	240	213	192	154
	5	M	4.13	1.239	826	620	496	413	354	310	275	248	198
	7	M	4.89	1.466	978	733	587	489	419	367	326	293	235

Classificazione in accordo con lo standard  
ASABE S572.3 e la norma ISO25358

Classification according to ASABE S572.3 and ISO25358

Clasificación según ASABE S572.3 e ISO25358

	DIMENSIONE DELLE GOCCE DROP SIZE RATING DIMENSIONES DE LAS GOTAS
VF	Molto fine - Very fine - Muy fina
F	Fine - Fine - Fina
M	Media - Medium - Media
C	Grossa - Coarse - Gruesa